



ParcelMap BC is Fully Operational

FAQs and What's Next?

Brian Greening, Director, ParcelMap BC Operations, LTSA

Steve Mark, Technical Coordinator, ICI Society

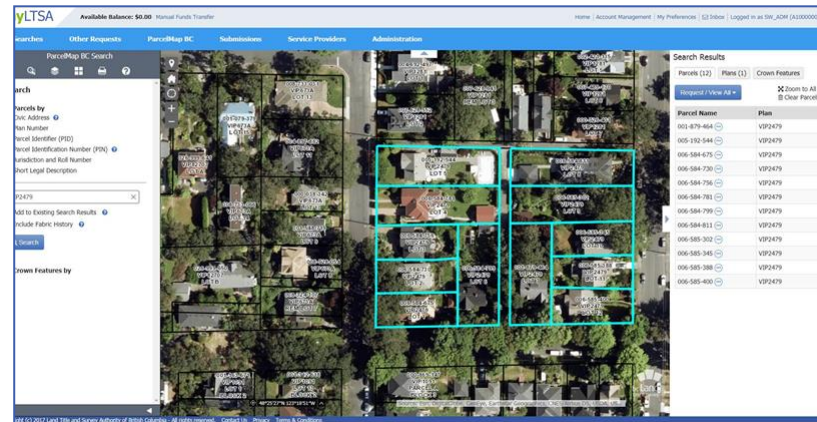
Esri Regional User Conference – Vancouver

November 9th 2017



What is ParcelMap BC?

The *single, complete, trusted* and *sustainable* map-based representation of land parcels and their relationship to adjacent parcels across all of British Columbia.



A key piece of **data infrastructure** supporting **economic and social development** in the province.

Why did we develop ParcelMap BC?

Meet demands for an efficient, consistent and accurate means of visually representing land title and survey information on a province-wide basis via rich, easy to use spatial data products and services



What information is included in ParcelMap BC?

A Comprehensive Information Model

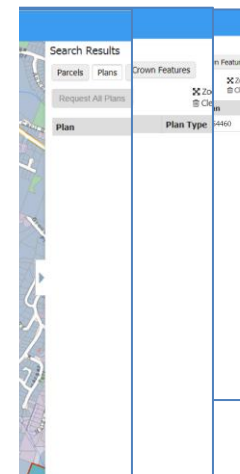
Parcels By Owner Type

Pa	Private	00-0
Pa	Federal	
Ni	Crown Provincial	visio
Pa	Crown Agency	, SEI
Le	Municipal	267
Pl	First Nation	564
Ju	Mixed Ownership	il Re
Ni	None	ord,
Re	Unknown	
Mi		
Pa		

ParcelMapBC_DataProducts.gdb

- Parcel_Common_Ownership
- Parcel_Common_Ownership_RealWorldChanges
- Parcel_JUROL_to_PID_Reference
- Parcel_Lines
- Parcel_Points
- Parcel_Polygons
- Parcel_Polygons_RealWorldChanges**
- Parcel_Shared_Geometry
- Parcel_Shared_Geometry_RealWorldChanges
- Plans
- Plans_RealWorldChanges
- Spatial_Improvement_Vectors
- Survey_Control_Points

- Parcel Points - Estimated Error @95%
- < 20cm
 - 20cm - 1m
 - 1m - 5m
 - > 5m
- Survey Control
- GEODETIC, GOOD
 - GEODETIC, ANOMALOUS
 - GEODETIC, DESTROYED
 - SURVEY
 - OTHER



How can you access ParcelMap BC?

myLTSA
for Enterprise and
Explorer Users



myLTSA
for Land Surveyors



GUEST ACCESS
through ltsa.ca



ICI Society
GeoShare

**ParcelMap
Direct**

BC Data
Catalogue

parcelMapBC

What activities are supporting ParcelMap BC use?

LTSA

Leading adoption / promotion of ParcelMap BC across all customer segments

- ParcelMap BC Adoption Working Group - *coming this Fall*
- ParcelMap BC Outreach & Awareness Activities – *in planning & ongoing*

ICI Society

Supporting the adoption of ParcelMap BC by Society members:

- Data Catalog has Province-wide Parcel Snapshot – *live now with weekly refresh*
- User Conferences 2017/18 – Nov 23rd Victoria Presentations - *Workshops planned for 2018*
- PMBC Order Processing Extension for GeoShare - *member support & outreach*
- Expanded DSLA terms for local government members

What are the most frequently asked questions?

1. How often is ParcelMap BC updated?
2. How are Strata Parcels Mapped? What about Airspace Parcels?
3. Are surveyed interests - like rights of way and easements - included?
4. What are Spatial Improvements and how do I use them?
5. What is the difference between survey fabric and assessment fabric?
6. How does ParcelMap BC classify parcel Owner Types?
7. What is happening to the ICF and ICI Society Cadastre?

Questions from the floor?

Where can you learn more about ParcelMap BC?

More Information:

ltsa.ca/ParcelMapBC

ICI Society Members:

<https://www.icisociety.ca/parcelmap-bc/pmbc-forum-faq/>

Support & Inquiries:

Call Customer Support

☎ Greater Vancouver area: 604-630-9630

☎ Elsewhere in BC, Canada and the US: 1-877-577-LTSA (5872)

Press 1 for Customer Service Centre for general land title and survey matters, including policy and practice information.

Press 2 for myLTSA Technical Support for myLTSA portal matters, including assistance with accounts and electronic filing and search service technical inquiries

myLTSAtechsupport@ltsa.ca