

GIS Web Based Editing

Presented by: Thomas Roussell,
Computer Resources Specialist
Acadian Timber

October 28, 2015

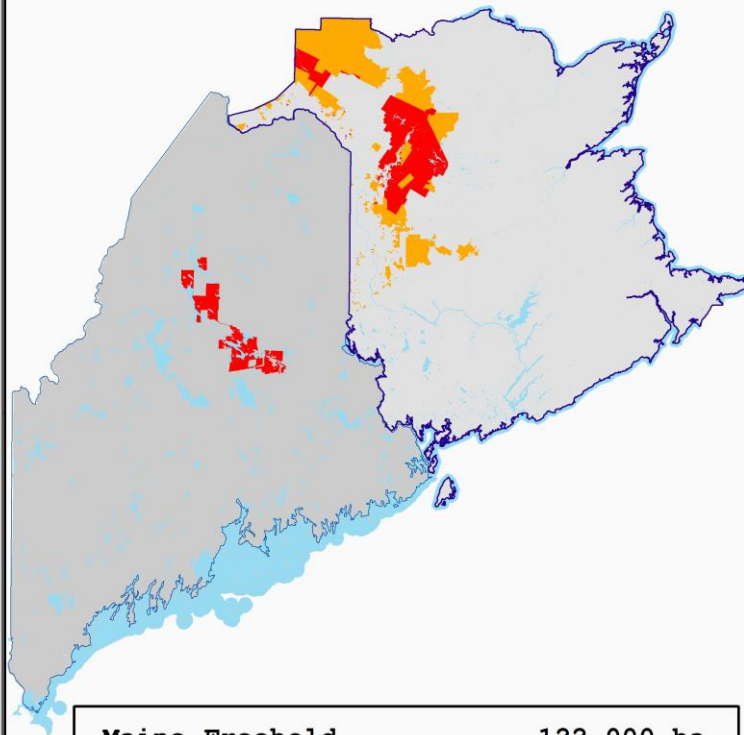


Organization Overview

- **Acadian Timber is a forest management company**
- **Approximately 20 GIS Users**
- **Esri Users since 1983**



ACADIANTIMBER



Maine Freehold	122,000 ha
New Brunswick Freehold	308,000 ha
New Brunswick Crown	526,000 ha

Total	956,000 ha

Project Description

- Tools were developed over a 26 year period (1986-2012) in ARC/INFO AML on the SUN platform.
- These tools allowed foresters to manage their own GIS data with relative ease. The tools needed to be moved to ArcGIS.
- The GIS Web Based Editor is one of those tools.
- It was developed using ArcGIS Server, SDE, Javascript API, Python, HTML, ASPX, VB.NET

Description (Continued)

- ArcGIS for Server Workgroup Advanced was purchased in the fall of 2012.
- Users were moved from ARC/INFO to ArcGIS by late 2014.
- To justify the cost of ArcGIS Server and an EDN licence, we dropped 3 of our 8 concurrent user licences.
- Training is accomplished by a series of videos. However , since the tool is user friendly, summer students are trained by the current users.

System Environment

- **2.4 GHz Quad Core Server, 40Gbytes RAM, 2.7TB Disk**
- **Window Server 2012, SQL Server, IIS**
- **7 SQL Databases; 26 map services; 4 geoprocessing services; 66 back layers**
- **Data is Stored in SDE, File Geodatabases, shapefiles, and SQL Server**

Benefits

- All spatial edits are done with 4 functions; Create, Cut, Merge and Delete.
- The SDE allowed multiple users to edit the same data source, so we could manage fewer feature classes.
- This year we will drop 2 more concurrent use licenses.

Lessons Learned

- **Software Developers worldwide are amazingly helpful.**
- **Stack Overflow, Javascript API samples, and Esri's developer summit videos are great resources.**
- **<http://video.esri.com/series/227/2015-esri-developer-summit-tech-sessions>**
- **Web based technology is fast and user friendly.**