

# Migrating Your Work to ArcGIS Pro

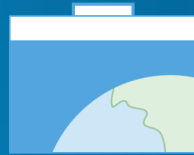
Presented by: Mike Gregotski – [mgregotski@esri.ca](mailto:mgregotski@esri.ca)

Slides available at: [bit.ly/uc2015pro](http://bit.ly/uc2015pro)



# It all starts with projects

- **Container for your work**
- **Create and configure a blank project**
- **Add content into the project**



Project (.aprx)



Maps



Toolboxes



Databases



Layouts



Styles



Tasks



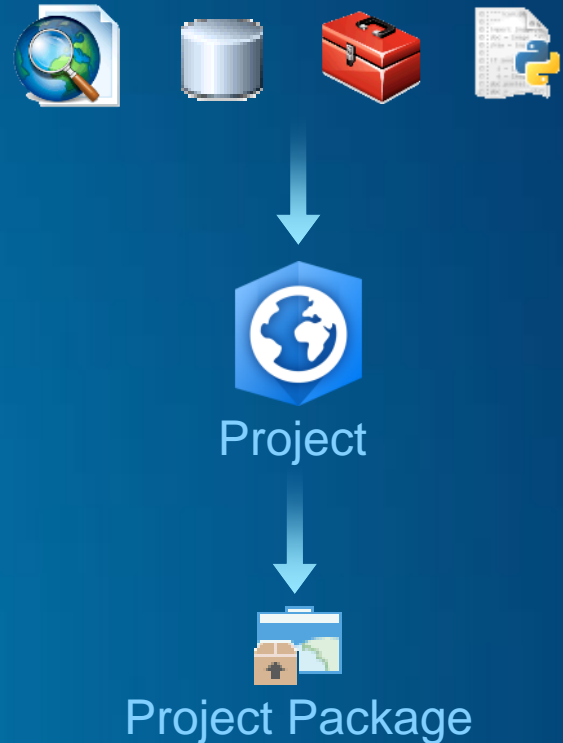
Folders



Locators

# Migration workflow

- ✓ Import MXD file into the project
  - Data frame = new Map
  - Layout view = new Layout
- ✓ Import models and Python scripts
- ✓ Add connections
- ✓ Modify workflows if necessary
- ✓ Save and share your work
  - Project package



# Common roadblocks

Problem	Solution
Unsupported data types	Repair the broken data source link
Python script and model migration	<i>Analyze Tools for Pro</i>
.NET add-ins written for ArcGIS for Desktop are not supported	Rewrite with new <i>ArcGIS Pro SDK for Microsoft .NET</i>
Layout issues	Visual check using Contents pane
Use existing .style file	Import style to .stylx format
Can't export projects back to MXD	Share as web-based content

# Demonstration

- Migrating your work to ArcGIS Pro

# Things to remember!

- ArcGIS Pro <> ArcMap
- ArcGIS Pro is still new – it's not perfect
- More functionality is coming in future releases
- Be patient – take the time to learn it

# Resources

- [ArcGIS Pro documentation](#)
  - [Migrate your work to ArcGIS Pro](#)
  - [Python migration for ArcGIS Pro](#)
- [ArcGIS Pro product page](#)
- [ArcGIS Blog – ArcGIS Pro](#)
- [Esri Canada Training](#)
  - [Introduction to ArcGIS Pro for GIS Professionals](#)
- [Esri Videos – ArcGIS Pro](#)