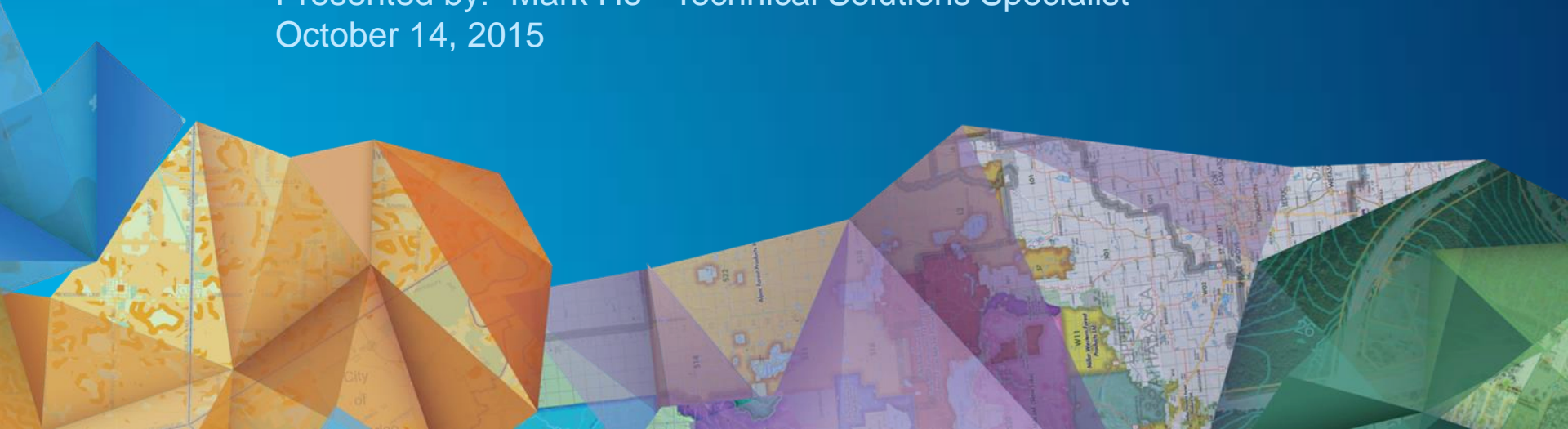


Migrating Your Work to ArcGIS Pro

Presented to: Esri Canada User Conference - Toronto

Presented by: Mark Ho - Technical Solutions Specialist

October 14, 2015



Agenda

- **Why ArcGIS Pro?**
- **Working with projects**
- **Migration checklist**
- **Demonstration**



2D and 3D

Faster

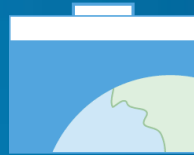
Powerful but easy











ArcGIS® Pro

It all starts with projects

- **Container for your work**
- **Create and configure a blank project**
- **Add content into the project**

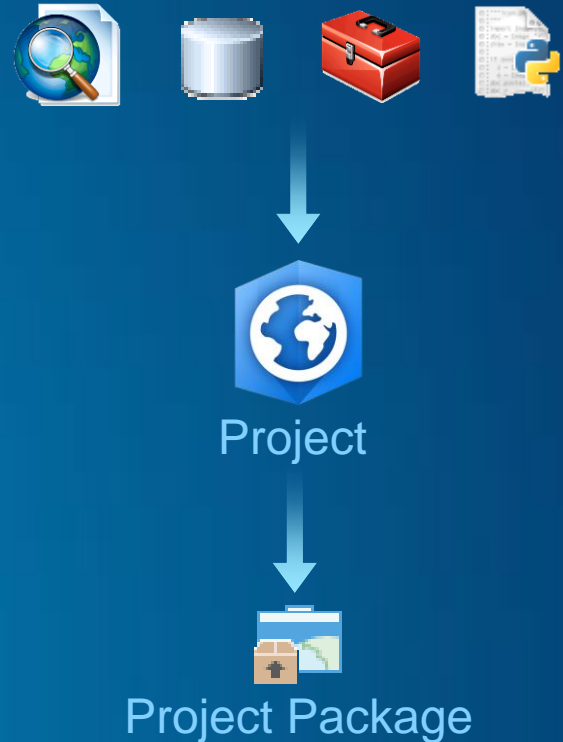


Project (.aprx)

-  Maps
-  Toolboxes
-  Databases
-  Layouts
-  Styles
-  Tasks
-  Folders
-  Locators

Migration workflow

- ✓ Import MXD file into the project
 - Data frame = new Map
 - Layout view = new Layout
- ✓ Import models and Python scripts
- ✓ Add connections
- ✓ Modify workflows if necessary
- ✓ Save and share your work
 - Project package



Common roadblocks

Problem	Solution
Unsupported data types	Repair the broken data source link
Python script and model migration	<i>Analyze Tools for Pro</i>
.NET add-ins written for ArcGIS for Desktop are not supported	Rewrite with new <i>ArcGIS Pro SDK for Microsoft .NET</i>
Layout issues	Visual check using Contents pane
Use existing .style file	Import style to .stylx format
Can't export projects back to MXD	Share as web-based content

Demonstration

- Migrating your work to ArcGIS Pro

Things to remember!

- ArcGIS Pro <> ArcMap
- ArcGIS Pro is still new – it's not perfect
- More functionality is coming in future releases
- Be patient – take the time to learn it

Resources

- [ArcGIS Pro documentation](#)
 - [Migrate your work to ArcGIS Pro](#)
 - [Python migration for ArcGIS Pro](#)
- [ArcGIS Pro product page](#)
- [ArcGIS Blog – ArcGIS Pro](#)
- [Esri Canada Training](#)
 - [Introduction to ArcGIS Pro for GIS Professionals](#)
- [Esri Videos – ArcGIS Pro](#)

© 2015 Esri Canada Limited. All rights reserved. Trademarks provided under license from Environmental Systems Research Institute, Inc. Other product and company names mentioned herein may be trademarks or registered trademarks of their respective owners. Errors and omissions excepted.

